

NEWMAN CORRIDORS IMPROVEMENT AND COMMUNITY CONNECTIVITY PLAN

PLAN DE VIAS Y DE CONECTIVIDAD DE NEWMAN

CLOSING
OPEN HOUSE
WEDNESDAY 2/7/24



TALLER DE
CLAUSURA
MIÉRCOLES 2/7/24

AGENDA

Welcome & Introductions

Project Overview

What We've Heard

Starter Ideas

Breakout Discussions

Next Steps

Bienvenida y presentaciones

Resumen del proyecto

Qué hemos oído

Ideas preliminares

Discusiones en grupos pequeños

Próximos pasos







An aerial photograph of a residential neighborhood, showing a grid of streets and numerous houses. The image is overlaid with a semi-transparent blue filter. The text 'PROJECT OVERVIEW' is centered in white, and 'RESUMEN DEL PROYECTO' is centered below it in yellow. A small 'Newman' logo is visible in the bottom right corner.

PROJECT OVERVIEW

RESUMEN DEL PROYECTO

PROJECT STUDY AREA | ÁREA DE ENFOQUE DEL PROYECTO



-  Project Corridors
-  CA State Route 33
-  Parks
-  Schools



PROJECT GOALS

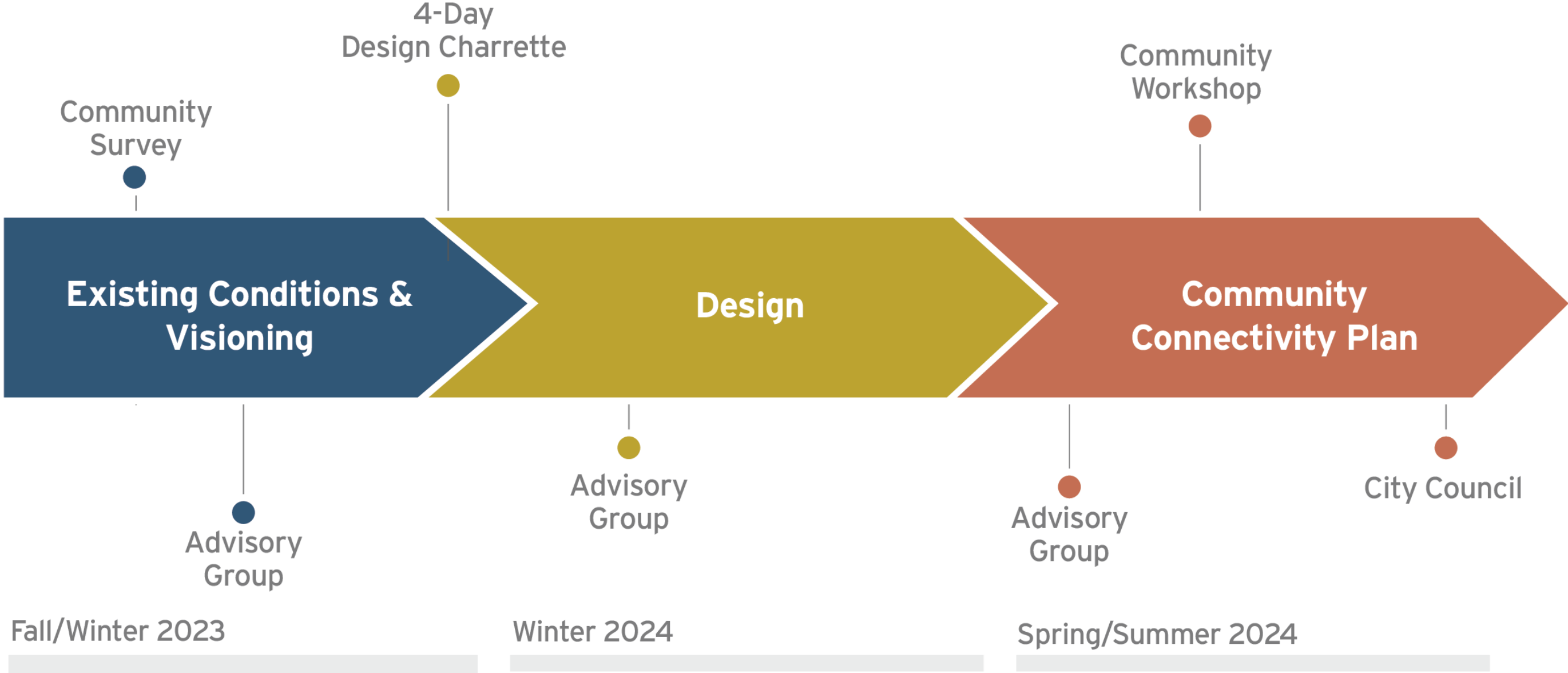
- Identify obstacles that impact people's mobility, access, safety, and comfort;
- Develop designs to improve conditions for walking and bicycling;
- Consider ways to include trees and other green infrastructure on city streets

METAS DEL PROYECTO

- Identificar los obstáculos que afectan la movilidad, el acceso, la seguridad y la comodidad de las personas;
- Desarrollar diseños para mejorar las condiciones para caminar y andar en bicicleta;
- Investigar cómo incluir árboles e infraestructura verde en las calles de la ciudad;



PROJECT TIMELINE | CRONOLOGIA DEL PROYECTO



An aerial photograph of a residential neighborhood, showing a grid of streets and numerous houses. The image is overlaid with a semi-transparent blue filter. The text "WHAT WE HEARD" is centered in white, and "LO QUE OIMOS" is centered below it in yellow.

WHAT WE HEARD

LO QUE OIMOS

THIS WEEK

- Opening workshop
- 14 hours of open studio time
- Other events
 - Women's Group meeting
 - Elementary school class
 - Meeting with promotoras
- Closing workshop

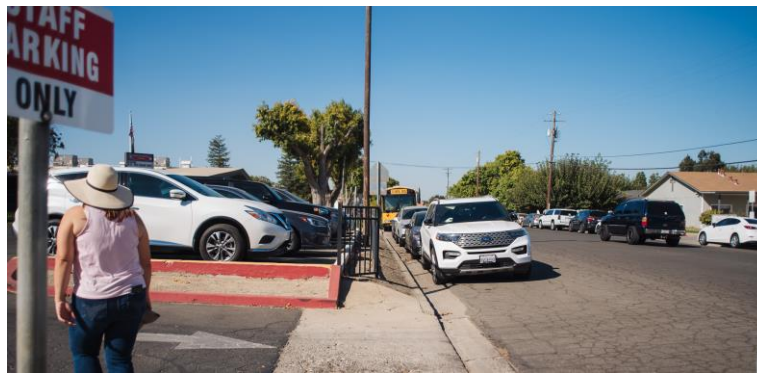
ESTA SEMANA

- Taller de apertura
- 14 horas de sesiones de puertas abiertas
- Otros eventos
 - Reunion con grupo de mujeres
 - Clase de la escuela primaria
 - Reunion con promotoras
- Taller de clausura



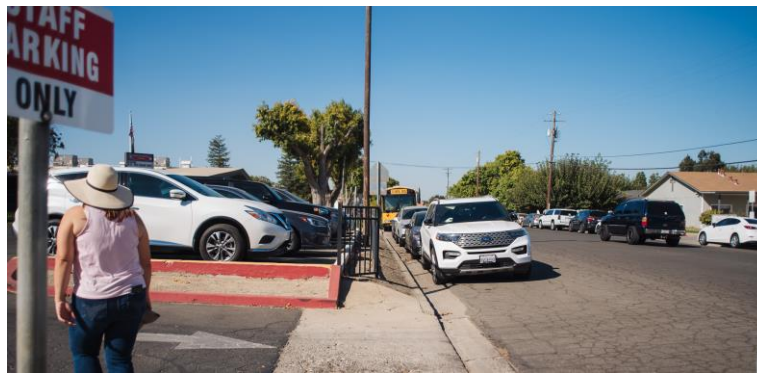
CHALLENGES

- Wide streets
- Long, unmarked crossings
- Underutilized space on streets
- Fast speeds
- Lots of students walking during school arrival and dismissal
- Lack of lighting on residential streets
- Poor pavement condition
- Stormwater and drainage issues



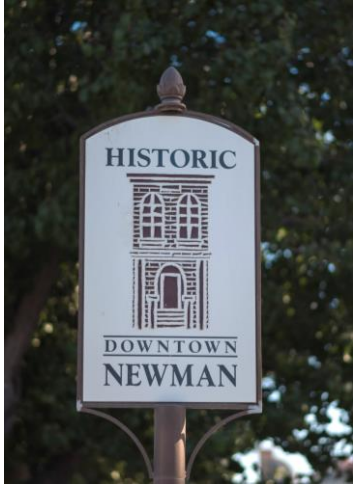
DESAFÍOS

- Calles anchas
- Cruces peatonales y mal marcados
- Espacio en las calles no utilizado
- Alta velocidad de vehículos
- Muchos alumnos que caminan en la mañana y la tarde
- Falta de alumbrado en calles residenciales
- Pavimento en mala condición
- Problemas con inundaciones



OPPORTUNITIES

- Accommodate people of all ages and abilities who are walking and biking as well as driving
- More landscaping and improved tree canopies
- Extend Main Street experience to Inyo Ave
- Encourage appropriate redevelopment



OPORTUNIDADES

- Acomodar a gente de todas las edades y habilidades que caminan o andan en bicicleta además de ir en carro
- Instalar más plantas y cubierta de árboles
- Extender la experiencia de Main Street a la Avenida Inyo
- Promover redesarrollo apropiado



An aerial photograph of a residential neighborhood, showing a grid of streets and numerous houses. The image is overlaid with a semi-transparent blue filter. The text is centered in the middle of the image.

BREAKOUT DISCUSSIONS
DISCUSIONES EN GRUPO PEQUEÑO

1

1. T Street and Hardin Road

2. Yolo Street

2

3. Inyo Ave and Canal School Road

4. Opportunity Sites

3

4



An aerial photograph of a residential neighborhood, showing a grid of streets and numerous houses. The image is overlaid with a semi-transparent blue filter. The text "NEXT STEPS" is centered in white, and "PROXIMOS PASOS" is centered below it in yellow.

NEXT STEPS

PROXIMOS PASOS

NEXT STEPS | PROXIMOS PASOS

- Refine design concepts
- Develop draft plan
- Summer workshop to present draft plan
- Pursue funding opportunities
- Visit the project website and take the **community survey!**
- Sign up for our **project email list!**
- Refinar conceptos de diseño
- Desarrollar el plan preliminar
- Taller en verano para presentar el plan preliminar
- Buscar oportunidades para financiar la implementación
- ¡Visite el sitio web del proyecto y responda a la **encuesta de la comunidad!**
- ¡Regístrese en nuestra **lista de correo electrónico del proyecto!**



THANK YOU!

NEWMAN COMMUNITY
CONNECTIONS PLAN

¡GRACIAS!

PLAN DE VIAS Y DE
CONECTIVIDAD DE NEWMAN

